

LIMITED LIFETIME WARRANTY

To activate your product warranty, please register this product immediately at:

www.InsightTechGear.com/warranty



Dominate the Darkness™

Insight Tech-Gear
9 Akira Way, Londonderry, NH 03053
Toll Free: 877-744-4802

www.InsightTechGear.com

© Insight Tech-Gear 2009



HX150R™

Rechargeable



INSIGHT
TECH GEAR
Dominate the Darkness™

The HX150R is equipped with Smart-Power Technology™ that allows the operator to pre-program the desired "On" mode. A Programmed mode can then be easily turned off and reprogrammed to adapt to any newly desired "On" mode. This powerful, handheld LED illuminator can be used for target acquisition and identification. It offers a high degree of tactical flexibility through the use of adjustable intensity levels and selectable operational modes. It is extremely rugged and is designed to provide a reliable and high quality illumination beam in the most demanding operational applications.

GENERAL INFORMATION

HX150R Specifications

Light Source Cree High Intensity LED

LED Output 150 Lumens

Run Time 180 Minutes on High / 300 Hours on Low

Waterproof 5 Meters for 5 Minutes

Weight 6.5 oz. w/Battery

Dimensions 1.3" Head, 1" Body x 5.9" Long

Lithium Battery Power Rechargeable Li-ion 3.7 Volts

Features

- Multiple Programmable Modes:** Constant On, Momentary On, Strobe, Dimming, S.O.S., Auto Off
- Digitally Managed Circuit to Control Output Power
 - Hard-Coat Anodized Aluminum Construction
 - Rechargeable Lithium Battery, Wall Charger, Charging Tube and Heavy-Duty Adjustable Lanyard Included

Optional Accessories

- Flip Caps
- Traffic Baton
- Belt Pouch
- Car Charger Kit

WARNINGS

- The HX150R is powered by 1, 18650 lithium battery. Lithium batteries can explode or cause burns if short-circuited, punctured, or disassembled. Insight recommends using only 18650 batteries (P/N 060-LI186-0002) provided by Insight. Never install a defective battery in the HX150R.
- Always insert battery into the charging tube or flashlight with correct polarity. Ensure that the positive (+) end is facing the correct way.
- Never recharge or install a defective battery. Prior to use, inspect all batteries for cracks, leaks, or bulging.
- To avoid possible damage to the HX150R, read "Preparation for Use" before installing battery into flashlight.
- Do not use the HX150R in environments containing an explosive atmosphere or in areas where gasoline, paints, solvents, or other flammable liquids are stored.
- The HX150R will generate heat. Do not hold the bezel or lens against any portion of the human body.
- The HX150R produces an intense light source. Avoid looking directly into the LED.

LIMITED LIFETIME WARRANTY

INSIGHT TECH-GEAR

Insight Tech-Gear warrants this product to be free from defects in workmanship and materials for the life of the product. This Limited Lifetime Warranty covers the product but excludes batteries, bulbs, and accessories.

At its sole discretion, Insight Tech-Gear shall either repair or replace any product or part (batteries, bulbs, and accessories not included) which is found to be defective under normal use and service. Insight's obligation to either repair or replace shall be the purchaser's sole and exclusive remedy under this warranty. Damage from batteries is not covered. Carefully follow maintenance instructions to prevent battery damage from occurring.

There are no other warranties, expressed or implied, other than as set forth on this page, and Insight Tech-Gear disclaims any warranties of merchantability or fitness for a particular purpose. Insight Tech-Gear shall not be liable for incidental, consequential or special damages arising out of or in connection with product use or performance.

For service, repair, or replacement, please call Insight Customer Service at 1-877-744-4802 for an RMA number, and ship UPS prepaid.

MAINTENANCE

Cleaning

Whenever the HX150R becomes dirty, or after exposure to salt water, it should be cleaned by rinsing with fresh water or mild soap and water and then wiped dry with a soft cloth. The illumination lens may be cleaned using a soft cloth with water, alcohol, or general purpose window cleaner.

Cleaning Spring Contacts

Spring Contacts can become dirty over time and will require occasional cleaning for proper performance. Remove the bezel to access the spring. Remove the spring and clean both ends with isopropyl alcohol.

End Cap and Bezel O-Ring

The End Cap and Bezel O-ring should routinely be inspected to ensure it is clean and supple. Periodically lubricate the O-ring with a petroleum jelly. The O-ring should be replaced if it becomes cut, nicked, or dried out.

Replacement Parts

Battery

060-LI186-0002

PREPARATION FOR USE

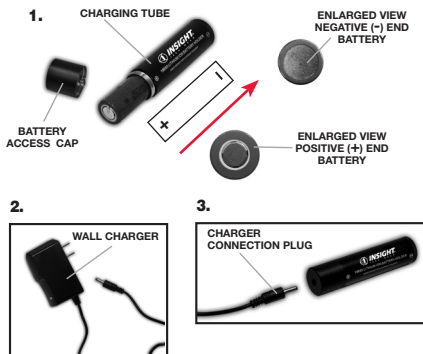


Rechargeable Li-ion Battery

1. Unscrew the **Battery Access Cap** on the **Charging Tube** and insert the battery negative end (-) first. Ensure that the (+) positive end is facing outward for the correct polarity and screw the battery access cap back onto the charging tube.

2. Select the wall charger.

3. Insert charger connection plug into charging tube located on the (+) positive end and plug in DC port. Red LED indicator light will turn Green when fully charged.



Battery Installation

1. **ALWAYS** Access the Battery Compartment by removing the Tail-Cap Assembly (A) by rotating counter clockwise.

2. Install 1, 18650 battery, ensuring the positive (+) end is against the Reflector/Bezel Assembly (B). Tightly secure the Tail-Cap assembly back onto the body of the HX150R.

CAUTION: Do not store the HX150R with the battery installed.

PROGRAMMING

Programmable modes are initiated by pressing the **Programmable Activation Button (C)** on the tail-cap.

From any On mode, press the **Programmable Activation Button 3 times**. This will set the desired "On" mode. You can program the HX150R to come on in Strobe, S.O.S, Full Bright or Dim mode. Dim mode can be programmed to come on with over 20 various levels of dim.

Cancel Programming

From any On mode, press the Programmable Activation Button 3 times within 3/4 of a second.



MODES OF OPERATION



Constant On Mode

Double click the Activation Button.



Momentary On Mode

Press the Activation Button and Hold.



Strobe Mode From On

From the ON mode, double click and release.

Strobe Mode From Off

From the OFF mode, double click and hold for 1/2 second on the 2nd click, then release the Activation Button.

Strobe Mode to Constant Mode

From the Strobe ON mode, click once for full bright Constant On lighting.

Strobe Mode OFF

From the Strobe ON mode, click once, then release the Activation Button. The light will always return to "Constant On" after the first click from Strobe or Dim.



Dimming Mode

From the ON mode, click and hold the Activation Button for 4 seconds. Multiple levels of lumen brightness can be achieved from 10 - 100%. The light will always return to "Constant On" after the first click from Strobe or Dim.

Dim to Bright Mode

Push button 1 time and release.

Dim Mode OFF

From the Dim ON mode, click twice then release the Activation Button. The light will go Bright Mode on the first click, then shut off on the second click.



Auto On/Off: CAUTION

The HX150R will automatically turn off after 20 minutes to conserve battery power. The unit will flash 2 times at 19 minutes to warn of impending off. After the double flash warning, the operator has 1 minute before the light turns off. Any time during that minute, the operator can simply click the activation button once to cancel the auto/off feature and go into another 20 minute cycle.



S.O.S. Mode

From the ON mode, press 4 times. The HX150R will strobe 2 times to initiate the S.O.S. mode which deactivates the auto/off feature. The S.O.S. mode will run continuous up to 24+ hours on a fully charged battery.